

**Surge Protective Device**

**Technical Documentation**



The T1SPD is an easy to install surge protector that meets all applicable electric codes. It is used for 120/240 electrical services. The T1SPD is rated to handle surges 25% higher than the average lightning strike so it will work reliably for years. The T1SPD design prevents failure due to open neutrals or other system disturbances.

The T1SPD is compact and includes an LED indicator to show that it is working.

**Key Specs**

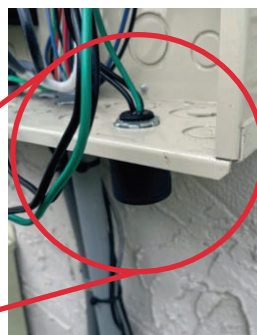
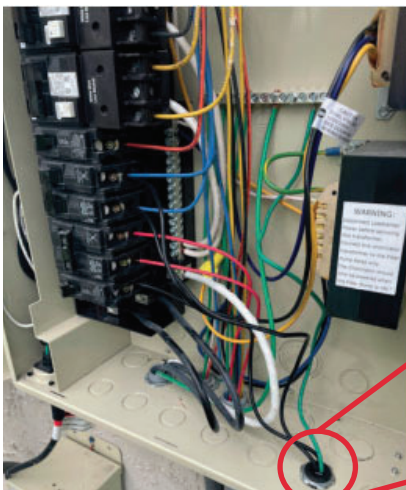
- Type 1 SPD

**Features**

- First Line of Defense Against Surges
- Great Value
- Easy to Install
- T1SPD 120/240

**General Technical Specifications**

Voltage	120/240 Single Phase,
MCOV	150 Vac
Open Neutral Protect	Yes
Response Time	Less than 1 Nanosecond
Nominal Peak Surge	25,000 A
One-time Surge	57,000A
Clamping Voltage	600
Fusing	Internal 200 kAIC
Indicator	LED
Included Accessories	90° mounting bracket

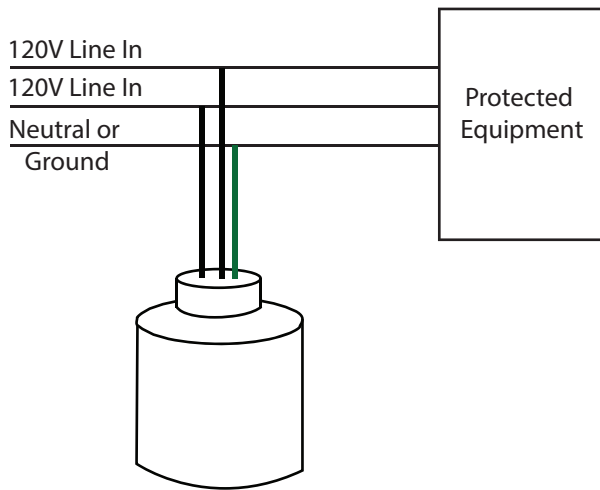


**⚠ DANGER!**

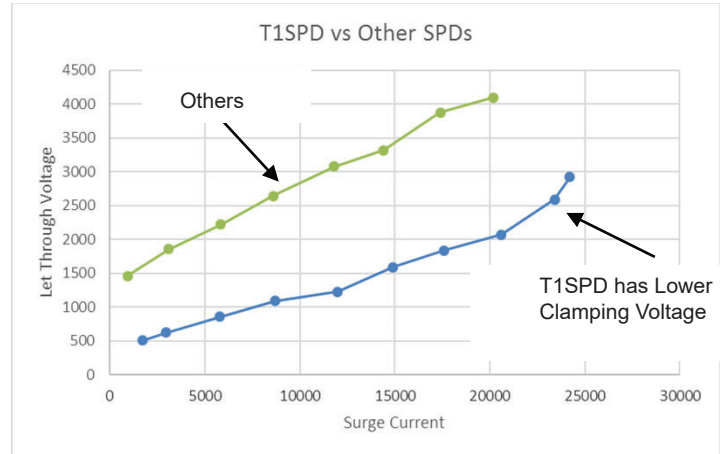
Only qualified personnel should install or service this system. Electrical safety precautions must be followed when installing or servicing this equipment. To prevent risk of electrical shock, turn off and lock out all power sources to the unit before making electrical connections or servicing.

## Installation Instructions

### DRAWING 1



## Performance



PEMCO  
11400 47th St Ste A  
Clearwater, FL 33762  
Phone: (800) 800-0966  
www.pemfg.com



While every precaution has been taken to ensure accuracy and completeness herein, PEMCO assumes no responsibility, and disclaims all liability, for damages resulting from use of this information or for any errors or omissions. Specifications are subject to change without notice.

Rev0 03-24